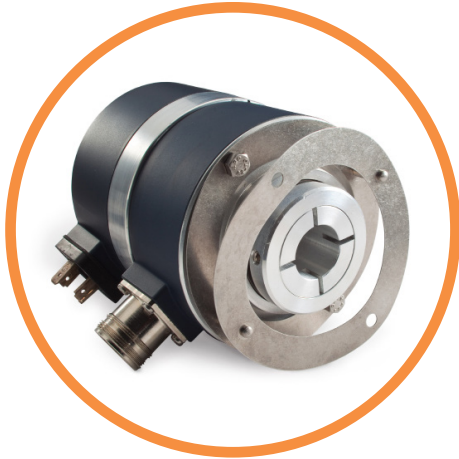


| GHU9

OVERSPEED SPEED SWITCH

Introduction

Especially designed for heavy duty industry (steel and paper mills, lumber, cranes, engine etc...). Sturdy compact conception. Excellent resistance to shocks/vibrations and to extreme axial/radial loads. 20mm blind shaft (reduction hubs available).



Features

The overspeed switch function on the 90mm range – a sturdy mechanical security module without external power supply:

- Radial commutation centrifugal switch without permanent contact
- High quality mechanics reliability
- Excellent repeatability
- Securised system, works without power supply
- Modular mounting possibility
- Commutation speed: standard calibration range between 800 and 4000 rpm (rotation per minute).

CENTRIFUGAL SWITCH SPECIFICATIONS

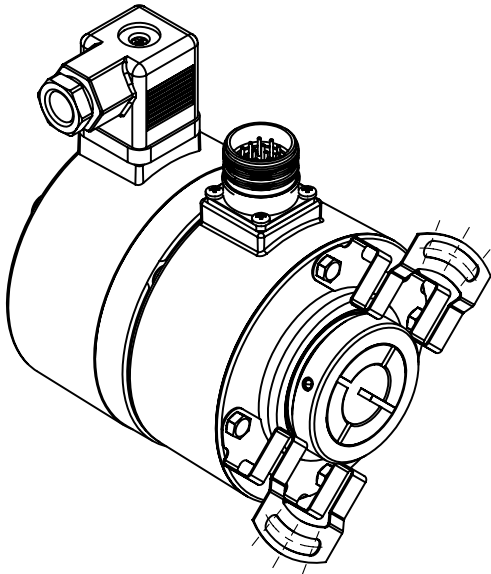
Material	Cover: Zinc Alloy
	Body: Aluminum
Max. Speed	1,5 . ns
Weight	1,10kg
Operating Temperature	-30 ... +130°C
IP(EN 60529)	IP 65 (Mounted)
Switch Speed	800 ... 4 000 rpm
Principle	Centrifugal
Mechanical Life-Time	500 000 Cycles
Contact Type	Opened or Closed
Max Current	6A / 240 Vac
Contact Material	Silver-Cadmium
Maximum Breaking Sequence	4/min
Breaking Accuracy	min ⁻¹ - 5% ... +8%



DIMENSIONS

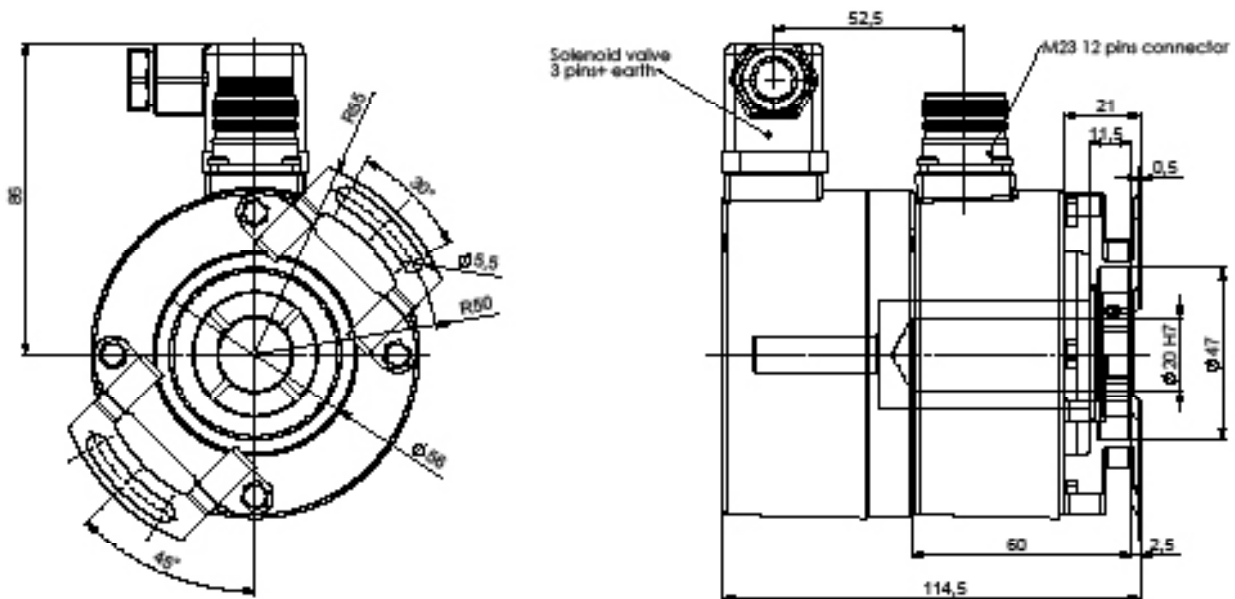
All dimensions are in millimeters.

Blind Shaft GHU9_20 with Overspeed Switch



The compactness of the assembly, which can be proposed by BEI SENSORS, allows the combination of overspeed switch and encoder presenting a particularly interesting cost / performances relation.

Example: Incremental Encoder GHU9_20 with Overspeed Switch



The commutation speed n_s is definitely calibrated in our factory.

Right or left rotation direction.

The switching speed n_s is defined for an acceleration = 100 s^2 (other, consult us).

Note: $1 \text{ rad.s}^2 \leftrightarrow 9,55 \text{ rpm.s}^{-1}$

The hysteresis is about -3% in counter clockwise direction compared with clockwise direction.

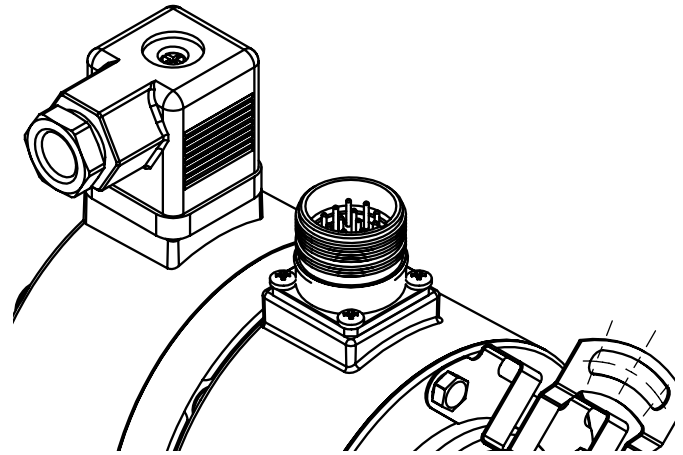
It is advised to choose the switching speed n_s in order that $n_s > 1,15.n_n$ (n_n : working speed, nominal speed).

The centrifugal relay must be used only in the case of an increasing speed.

In decreasing speed, the centrifugal switch will open automatically at a slower speed of approximately 40% of the calibrated switching speed n_s .

In the case of a higher acceleration than 100 s^2 , the switching speed will be higher (n'_s , cf here-under drawing).

Shocks / impacts can create premature switching or transient opening. This is particularly the case when the switch's direction of action and the shock are the same. Rotating the mounting position (60° division on flange) reduces the problem.

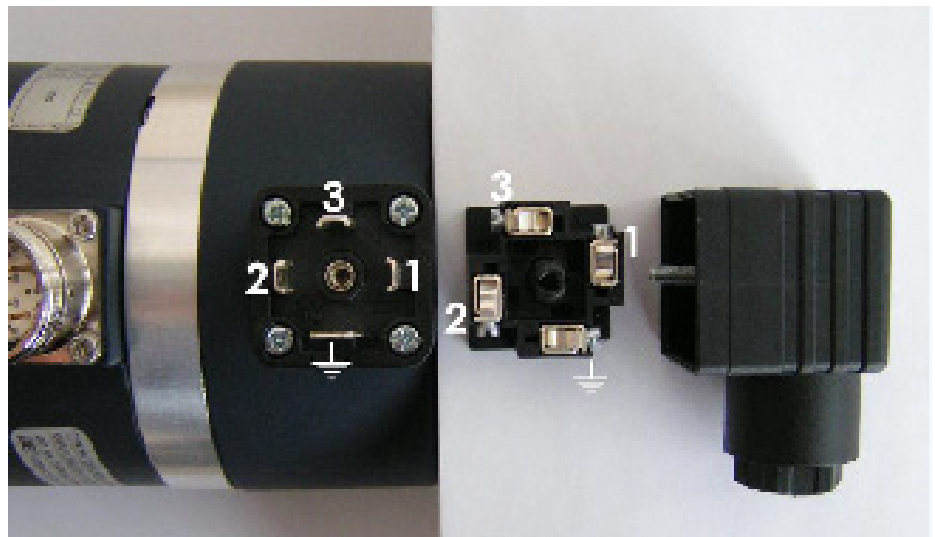


STANDARD CONNECTION

With 4 pinout solenoid valve connector.

Contact 1 to 3 can be connected according to the desired configuration (rest, work or opposite).

The earth pin of the connector must be connected to the ground of the installation.





AVAILABLE COMBINATIONS

(Consult us for special version: ex: flange / connection / specific speed...)

- Incremental Encoder + Overspeed Switch,
- Tacho-Encoder + Overspeed Switch,
- Absolute Encoder + Overspeed Switch,
- Incremental Encoder + Opto-Tacho + Overspeed Switch,
- Overspeed Switch + Overspeed sSwitch...

Standard Speeds (rpm): 1 000, 1 200, 1 500, 1 800, 3 000 (consult us for other speed).

Reference: consult us.

Note: The switch commutation speed is calibrated in our factory, no correction and no later modification is possible.



AGENCY APPROVALS & CERTIFICATIONS



Made in France

Page 4

Sensata Technologies, Inc. ("Sensata") data sheets are solely intended to assist designers ("Buyers") who are developing systems that incorporate Sensata products (also referred to herein as "components"). Buyer understands and agrees that Buyer remains responsible for using its independent analysis, evaluation and judgment in designing Buyer's systems and products. Sensata data sheets have been created using standard laboratory conditions and engineering practices. Sensata has not conducted any testing other than that specifically described in the published documentation for a particular data sheet. Sensata may make corrections, enhancements, improvements and other changes to its data sheets or components without notice.

Buyers are authorized to use Sensata data sheets with the Sensata component(s) identified in each particular data sheet. HOWEVER, NO OTHER LICENSE, EXPRESS OR IMPLIED, BY ESTOPPEL OR OTHERWISE TO ANY OTHER SENSATA INTELLECTUAL PROPERTY RIGHT, AND NO LICENSE TO ANY THIRD PARTY TECHNOLOGY OR INTELLECTUAL PROPERTY RIGHT, IS GRANTED HEREIN. SENSATA DATA SHEETS ARE PROVIDED "AS IS". SENSATA MAKES NO WARRANTIES OR REPRESENTATIONS WITH REGARD TO THE DATA SHEETS OR USE OF THE DATA SHEETS, EXPRESS, IMPLIED OR STATUTORY, INCLUDING ACCURACY OR COMPLETENESS. SENSATA DISCLAIMS ANY WARRANTY OF TITLE AND ANY IMPLIED WARRANTIES OF MERCHANTABILITY, FITNESS FOR A PARTICULAR PURPOSE, QUIET ENJOYMENT, QUIET POSSESSION, AND NON-INFRINGEMENT OF ANY THIRD PARTY INTELLECTUAL PROPERTY RIGHTS WITH REGARD TO SENSATA DATA SHEETS OR USE THEREOF.

All products are sold subject to Sensata's terms and conditions of sale supplied at www.sensata.com SENSATA ASSUMES NO LIABILITY FOR APPLICATIONS ASSISTANCE OR THE DESIGN OF BUYERS' PRODUCTS. BUYER ACKNOWLEDGES AND AGREES THAT IT IS SOLELY RESPONSIBLE FOR COMPLIANCE WITH ALL LEGAL, REGULATORY AND SAFETY-RELATED REQUIREMENTS CONCERNING ITS PRODUCTS, AND ANY USE OF SENSATA COMPONENTS IN ITS APPLICATIONS, NOTWITHSTANDING ANY APPLICATIONS-RELATED INFORMATION OR SUPPORT THAT MAY BE PROVIDED BY SENSATA.

Mailing Address: Sensata Technologies, Inc., 529 Pleasant Street, Attleboro, MA 02703, USA.

CONTACT US

Americas

+1 (800) 350 2727
sensors@sensata.com

Europe, Middle East & Africa

+33 (3) 88 20 8080
position-info.eu@sensata.com

Asia Pacific

sales.isasia@list.sensata.com
China +86 (21) 2306 1500
Japan +81 (45) 277 7117
Korea +82 (31) 601 2004
India +91 (80) 67920890
Rest of Asia +886 (2) 27602006
ext 2808